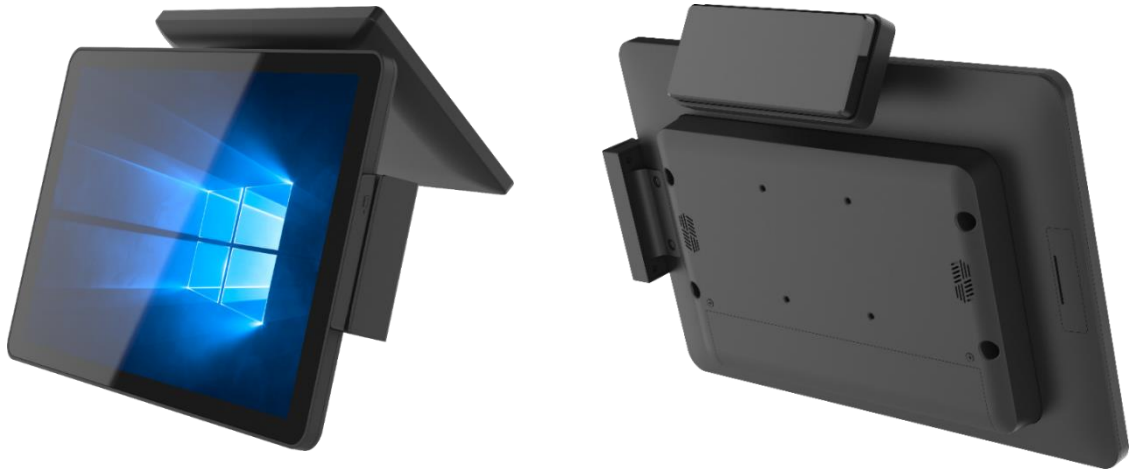


# 15.6" All in One SPOS

## MJ1N J6412

- ◇ Robust All-in-One POS terminal integrated with a wide variety of peripherals.
- ◇ Panel PC structure design to save Total Logistics Cost (TLC).
- ◇ Modular CPU box design allows easy adaptation to diverse Intel CPU platforms.
- ◇ Standard VESA holes to support various stands.
- ◇ Easily upgrade memory and storage by removing 4 screws.

## Features



**TYPE A**



**TYPE B**



**TYPE D+**



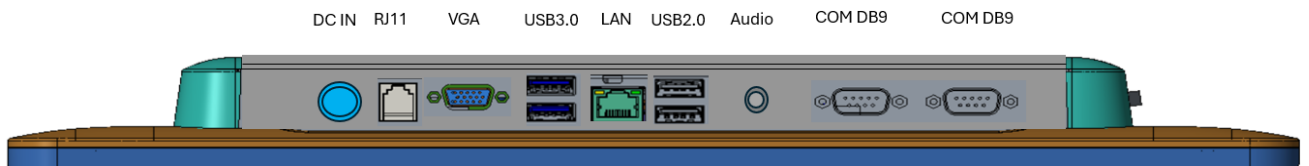
**TYPE E**

**Various stands support**

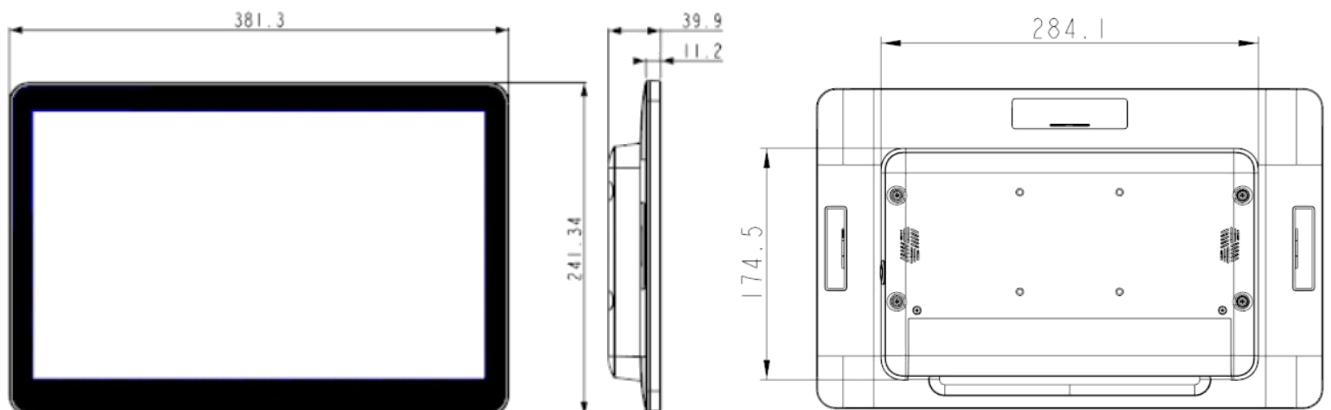
# Product Specifications (MJ1N)

<b>Touch Panel</b>	PCT	PCT (Projected Capacitive Touch) Support 10 points Multi-Touch
<b>LCD Panel</b>	15.6"	15.6" FHD 1920 x 1080 (300 nits)
<b>CPU</b>	FCBGA	Elkhart Lake J6412
<b>Memory</b>	SO-DIMM	DDR4 x 1 , Up to 16GB
<b>Storage</b>	m.2 2280 NVMe	m.2 2280 M-key slot x 1
<b>Interface</b>	Cash Drawer	Cash Drawer supported 12V
	Power Input	DC12V (Power Jack 4 pin with Lock)
	Audio Connector	3.5 mm audio jack x 1
	USB	USB 2.0 x 2 , USB3.0 x 2 Option Internal USB 2.0 x 4 (2 x 9 pin header)
	COM	Powered COM1 : 5V/12V and COM2 : RS232/485 selectable by jumper settings
	Display	D-Sub x 1
	LAN	Giga LAN x 1
<b>Other</b>	Power Switch	Power On / Off switch x 1
	AC Adaptor	12V
	VESA Holes	75 x 75 mm
	Operating Temperature	0 ~ 40 °C ( 32 ~ 104 °F)
	Storage Temperature	-20 ~ 60 °C (-4 ~ 140 °F)
	Dimension	381(W) x 39.9 (D) x 241.3 (H) mm / 15 (W) x 1.6 (D) x 9.5 (H) inch
	Weight w/o VESA Stand	G.W. 3.6 Kg / 7.9 lbs ; N.W. 2.6 Kg / 5.73 lbs
	Accessories	Optional MSR , VFD customer display , 10.1" 2nd display / USB interface Peripherals
	Regulation	CE , FCC & LVD

## I/O Interface (MJ1N)



## Dimensions (mm)



All information contained in this document is subject to change without prior notice.